

An independent, international  
research institute in  
plant science and  
microbiology



John Innes Centre

*Unlocking Nature's Diversity*

Fundamental and applied research to benefit agriculture,  
the environment, human health and well-being

Training scientists for the future  
Engaging with policy makers and the public



John Innes Centre



**UEA**  
University of East Angles

**NHS**  
Norfolk and Norwich  
University Hospitals  
NHS Foundation Trust

The Sainsbury Laboratory  
**TSL**

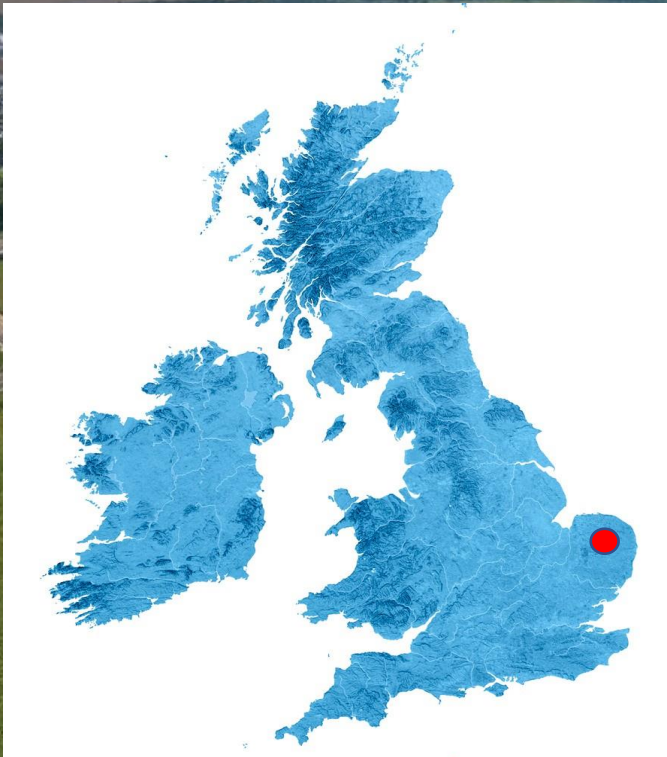
**John Innes Centre**

**Earlham Institute**  
Decoding Living Systems

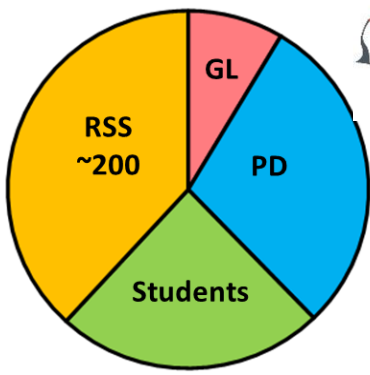
**Quadram Institute**  
Science • Health • Food • Innovation

**4**  
MAJOR  
INSTITUTIONS

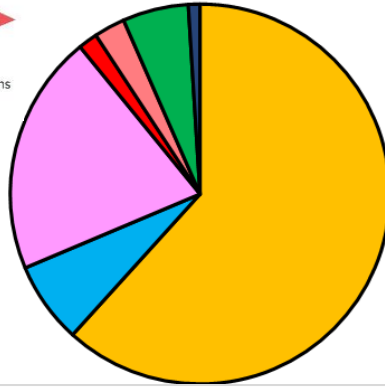
**100+**  
COMPANIES



# Technician Commitment : covers all our Research and Support Staff

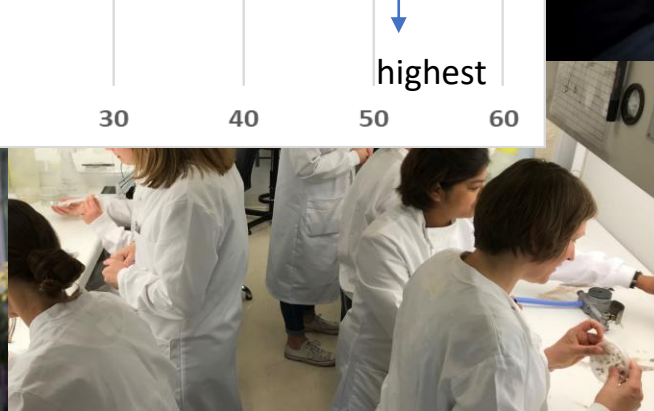
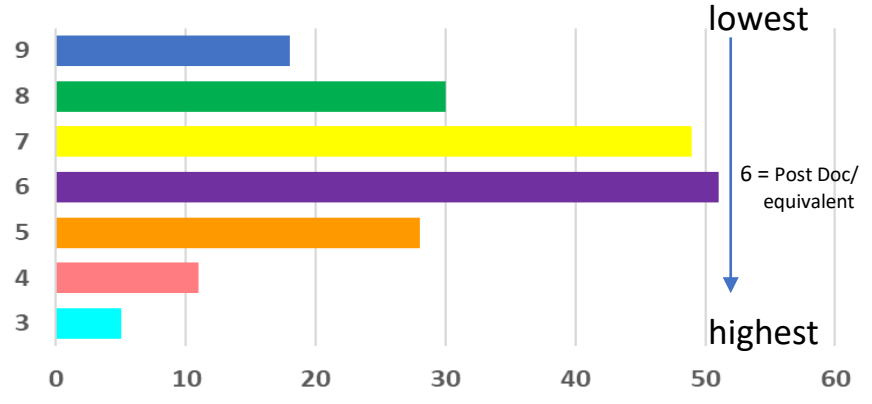


57  
of our technicians  
have PhDs



- Research Assistants
- Senior Scientist
- Technical Support
- Project managers
- Senior Management
- Admin/Comms
- Lab Managers

What Grade are our Technicians?



1. Technician led activity to promote **engagement** and **visibility** of Research and Support Staff (RSS)
2. New external opportunities opened up to technical staff this year



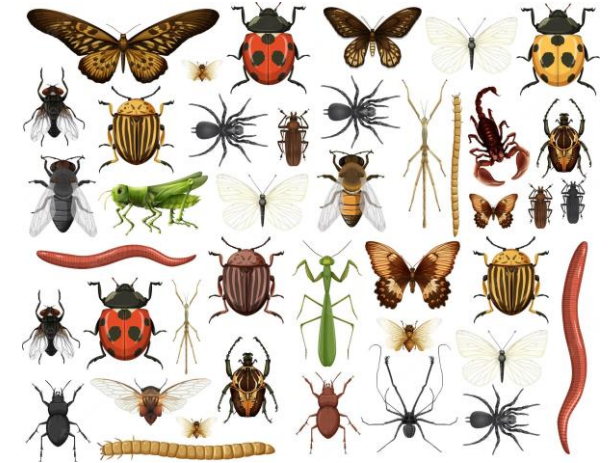
# Raising the visibility of our technology platforms

Field

Field Experimentation  
Horticultural Services  
Informatics  
Entomology and Insectary  
Crop transformation and Gene Editing  
Reverse Genetics  
Genotyping  
Bioimaging – Photography  
Bioimaging - Microscopy  
Biophysical Analysis  
Structural Biology  
Metabolomics  
Nuclear Magnetic Resonance (NMR)  
Proteomics  
Analytical Chemistry

Molecule

Supporting JIC science, the wider research community and industry.



## Platform Open Days:

28<sup>th</sup> Nov: Entomology & Insectary

- Including networking lunch for RSS
- Find out about each others roles
- What the platforms offer

# Twitter: @RSSV\_JIC (different platforms hosting the account for a week)

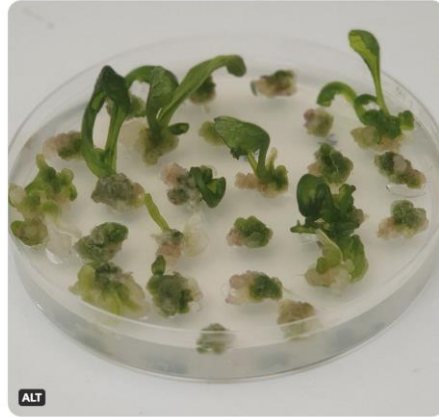


## Crop Transformation Platform:

RSSV @RSSV\_JIC · Oct 7  
A glimpse inside a tissue culture room, image credit @HarwoodWendy



RSSV @RSSV\_JIC · Sep 30  
RSSV twitter is excited to be showcasing some of the great work going on @JohnInnesCentre by our research and support staff' next week we start with the 'Crop Transformation Group' and @HarwoodWendy 's team #BiologyWeek



RSSV  
@RSSV\_JIC

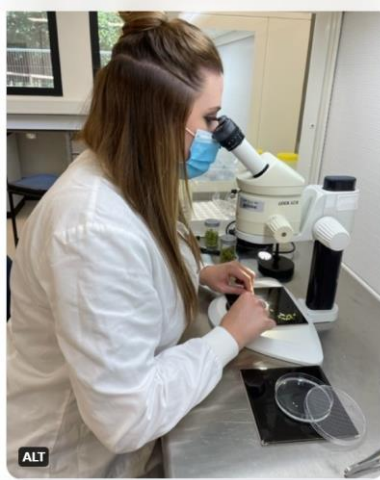
Want to know how GM plants are made? Take a look on our YouTube channel. [youtube.com/watch?v=cbtpCt...](https://youtube.com/watch?v=cbtpCt...) credit: @chhetry\_monika @sparrow\_penny @Ruby\_OGrady @JohnInnesCentre



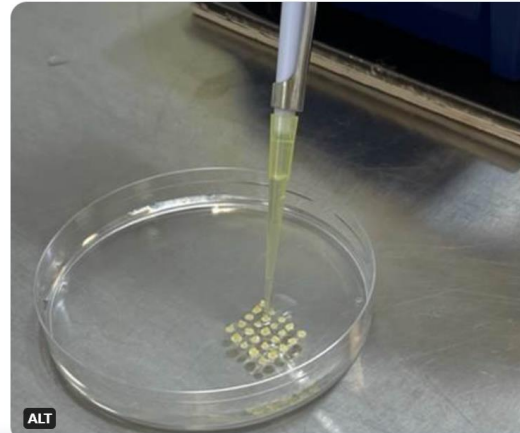
youtube.com  
Brassica Transformation  
The Brassica family of plants includes crops such as oil seed rape as well as vegetables such as broccoli, cabbage and ...

1:14 PM · Oct 4, 2022 · Twitter Web

RSSV @RSSV\_JIC · Oct 5  
Barley plants growing in a Controlled Environment Room (CER). Credit @HarwoodWendy



RSSV @RSSV\_JIC · Oct 4  
Immature barley embryos being inoculated with Agrobacterium tumefaciens #BiologyWeek



RSSV @RSSV\_JIC · Oct 6  
Barley Transformation Training @JohnInnesCentre by @JoKrasauskas Crop Transformation Group with visitor @sa\_ganie from @RoyalHolloway University



2 7 9

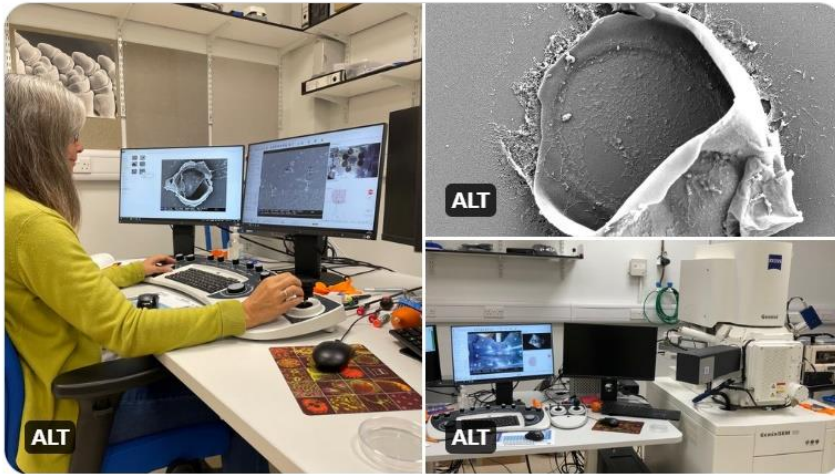
# Twitter: Bioimaging Platform

RSSV

660 Tweets

Follow

as expected but it's a good attempt. Kim will refine the method and try again.



Nick Talbot

@talbotlabTSL

Director of The Sainsbury Laboratory

We are extraordinarily lucky to have fantastic technology platforms [@JohnInnesCentre](#) & [@TheSainsburyLab](#) with whom we collaborate & receive expert guidance & support. Kim Findlay & her team provide bio-imaging expertise to us, such as this SEM analysis of appressorium formation

[RSSV](#) @RSSV\_JIC · Oct 20

Kim Findlay chemically fixes Magnaporthe (a fungal pathogen of cereals) for Nick Talbot's group in TSL. They've been grown on coverslips for 24hrs until appressoria develop. In the SEM these look like balloons, stuck to the glass. They are less than 10 microns wide.

[Show this thread](#)



1:50 PM · Oct 21, 2022 · Twitter Web App

10 Retweets 43 Likes



@RSSV\_JIC

# 'Accessible Science' Day

- Organised and hosted by RSS
- Brings the RSS community together
- Run the day before the Institute's 3day ASM
- Hybrid format
  - This year we also streamed into 8 schools
  - 7 local, 1 from London

Could we expand this to more schools/ or **Universities with a plant science** interest?

Can you help us link up with University contacts... for our October 2023 event

[Penny.Hundleby@jic.ac.uk](mailto:Penny.Hundleby@jic.ac.uk)



**Ben Dewhurst**  
@dewhurst\_ben

Tweet from local school teacher



A belated, but very sincere, thank you to everyone at [@RSSV\\_JIC](#) for organising yesterday's talks. Our students were talking about them today and they have stimulated lots of questions.

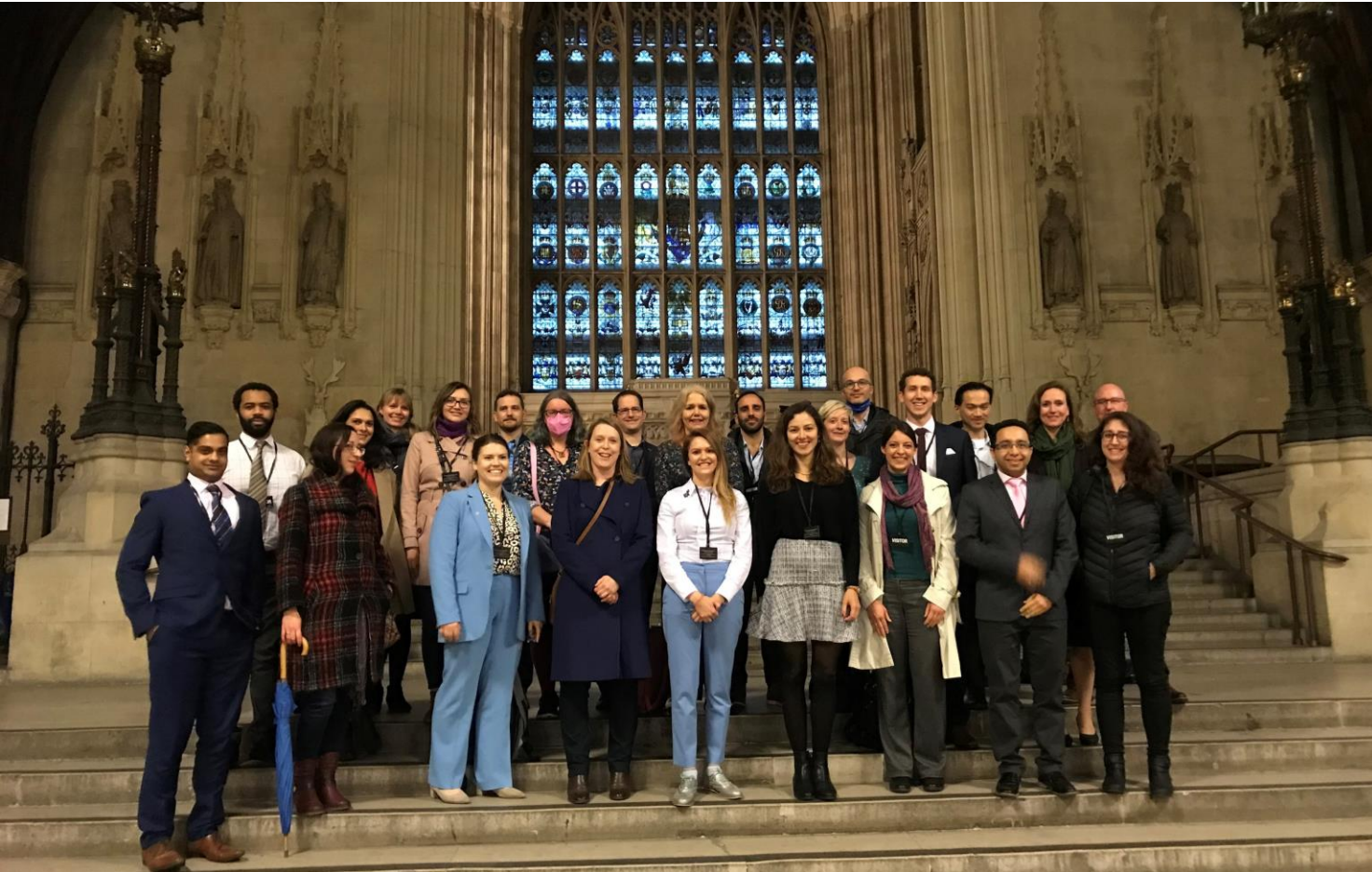
[@OilseedRachel](#) [@Thomas\\_Mathers](#) [@HsuanPai1](#)  
[@plantpollinator](#) [@MarkSmedley15](#) [@SadiyeHayta](#)





# Policy pairing scheme

This scheme gives policymakers and research scientists an opportunity to experience each other's worlds. 2022 opened up to technical staff too.



Week in Westminster

2 days shadowing an MP or Civil Servant

Reciprocal visit



Department for  
Business, Energy  
& Industrial Strategy



Food  
Standards  
Agency



Each year approx. 350 applicants across the UK and 30 selected



Biotechnology and  
Biological Sciences  
Research Council

# Flexible Talent Mobility Account (FTMA).

To support secondments of 3-4 month and other activities that contribute to the **mobility** and **development** of researchers and **technical staff** at leading bioscience organisations.

The awards support the exchange of personnel, perspectives and knowledge, skills and expertise between the academic and industrial sectors.



ENZA ZADEN



Science Advisor & Policy Engagement Officer  
3 days/ week for 4 months

Prince 2  
Qualification

External  
Coaching



John Innes Centre

# Going Forward:

Continue to create and promote opportunities for our Research and Support Staff (RSS)


Develop a Research Culture that empowers and encourages RSS to take these opportunities

- Staff engagement and awareness of opportunities remains a limiting factor

## Acknowledgements and contacts:



**Dr Penny Hundleby CSci, FRSB**

Technician Commitment Lead  
Penny.Hundleby@jic.ac.uk  
 @sparrow\_penny



**Dr Clare Stevenson CSci, FRSC**

Head of Directorate JIC  
clare.stevenson@jic.ac.uk  
@cemstevenson



**Sarah Tolland**

Research and Support Staff Voice Chair  
sarah.tolland@jic.ac.uk  
@RSSV\_JIC